

# LARGE GROUP NETWORK

## PLAYBOOK



2022

# TABLE OF CONTENTS

**1**

**OVERVIEW**

---

**2**

**PLAYBOOK**

---

**3**

**PROCESS CLARITY**

---

**7**

**INTERSECTION WITH  
PEER-TO-PEER COACHING CIRCLES**

---

**9**

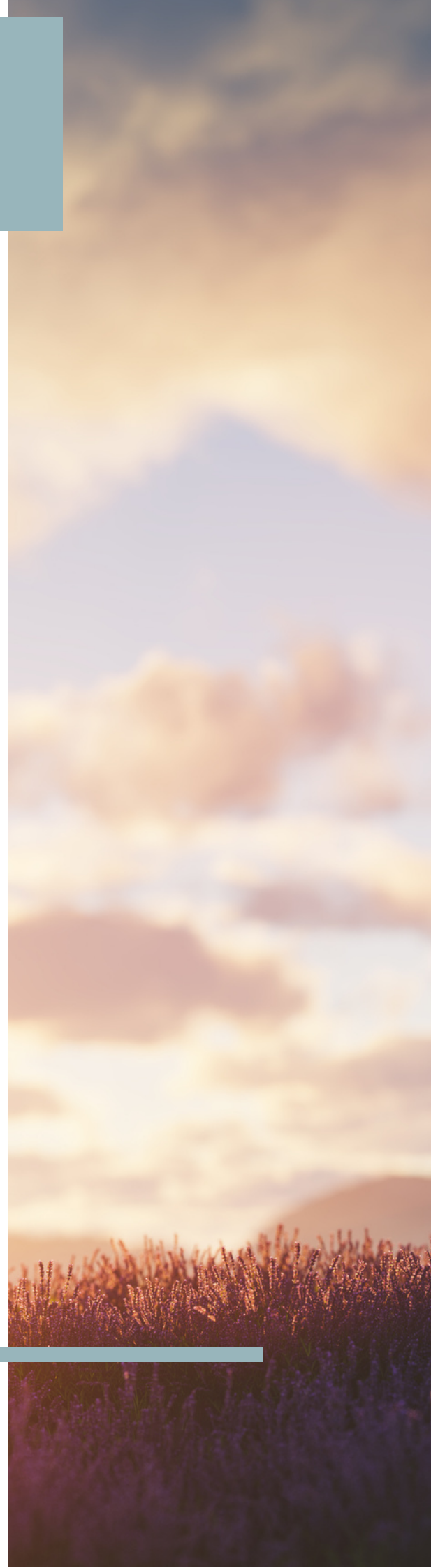
**NEXT STEPS**

---

# OVERVIEW

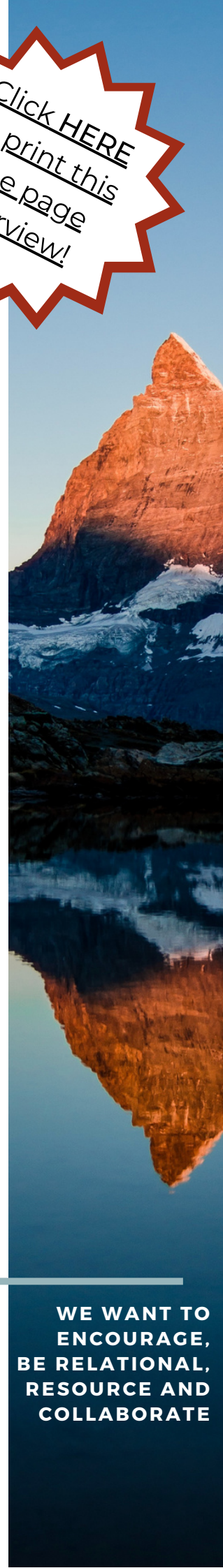
Large Group Networks (LGN) within the WCD are role/affinity-based groups that span across our whole District. You'll find more information as you read through this 'Playbook,' but the heart of why we have LGN's is to maximize relationships toward Greatest Kingdom Impact.

Large Group Networks are always at varying stages of development and reflect different network-specific dynamics and priorities. No two LGN's look exactly the same, and Network leaders continue to adapt to changing realities. However, what is represented here reflects a co-created path (involving current LGN leaders) to help provide a framework for LGN's moving forward.



# LARGE GROUP NETWORK

# PLAYBOOK



## **WHY DO WE EXIST?**

To maximize relationships toward greater kingdom impact.

## **HOW DO WE BEHAVE?**

### **RELEASE BLESSING:**

We prioritize cheering one another on (encouragement)

### **NO ONE LEFT BEHIND:**

We are intentionally invitational & hospitable (relationship)

### **OPEN-HANDED:**

We share generously all God has given us (resource)

### **SHARED LEARNING:**

We affirm that everyone has something to contribute (collaboration)

## **WHAT DO WE DO?**

As a relationship-based network, we catalyze supportive, flourishing relationships and facilitate resource collaboration and innovation.

## **HOW WILL WE SUCCEED? (STRATEGIC ANCHORS)**

### **CLEAR COMMUNICATION:**

Ensure people know what they need to know

### **OBVIOUS ONRAMPS:**

Ensure clarity around how to connect to the LGN

### **SUPPORTIVE STRUCTURES:**

Ensure the right supports are accessible

## **WHAT'S MOST IMPORTANT RIGHT NOW?**

Establish consistent, equitable, scalable structures and supports (clear framework, database)

Raise value, awareness, and accessibility of LGNs for all Licensed Workers (and as appropriate, to lay volunteers)

## **WHO DOES WHAT?**

### **DISTRICT STAFF**

- Vision Cast Culture
- Create Admin Support docs
- Develop Database
- Update Website
- Liaison with Network Lead

### **NETWORK LEADS**

- Ministry Plan Development & Execution
- In-Network Communication
- Liaison with District
- Leadership Recruitment

**WE WANT TO  
ENCOURAGE,  
BE RELATIONAL,  
RESOURCE AND  
COLLABORATE**

# PROCESS CLARITY

## **District Field Staff Involvement**

**Overall LGN Lead** (design and process): Jeremy Peters ([j.peters@thewcd.ca](mailto:j.peters@thewcd.ca))

**Event Support:** Jake Fraser ([jfraser@thewcd.ca](mailto:jfraser@thewcd.ca))

**Database Support:** Wendy Ng ([wng@thewcd.ca](mailto:wng@thewcd.ca))

## **Individual Network District Reps:**

- **Worship Pastors:** Jeremy Peters
- **Youth Pastors:** Jeremy Peters
- **Chaplains:** Clint Mix
- **Rural Church Pastors:** Graham English
- **Children's Pastors:** Sarah Hunter
- **Executive Pastors:** Wayne Regehr
- **Transitional Pastors\***: Graham English & Clint Mix
- **Missions Pastors\***: Jerin Thomas
- **New Ventures\***: Nick Kadun
- **Community Engagement\***: Nick Kadun

*\*Represent new LGNs as of Fall 2022 (either yet to be formed, or in early stages)*

**Each District Rep will dialogue with their respective Network Leads and determine the scope of their involvement, but could include:**

- Leadership recruitment/Onboarding
- Coaching/Equipping
- Facilitation of strategic dialogue, training, etc.
- Resourcing & Connections
- Attendance/participation at LGN gatherings

## District Admin Support

**Database (“Rock RMS”):** The WCD Operations team (led by Wayne Regehr) are working hard to implement a new database with very robust integration capabilities (beginning Fall 2022). The impact for LGN Lead Teams is more readily accessible information about who and how to connect with those in their Network.

**Event Registration:** The WCD office will provide registration and finance management for all events requiring RSVP and registration fees.

**Budget Guidelines:** The WCD office will provide parameters for what is considered an approved expense (in process as of Fall 2022).

**Budget Template:** The WCD office provide a LGN Budget Template to enable Network Leads to plan their ministry year (in process as of Fall 2022).

**Communication Guidelines:** The WCD office will provide guidelines for what LGN’s can expect regarding communication of their gatherings (in process as of Fall 2022).



## **Network Leads**

**Goal:** Each LGN will have a clearly identified Network Lead Team who will work together to fulfill the following responsibilities:

- Planning and facilitation of LGN gatherings & resources
- Communication within LGN, including assimilation of new people
- Coordination with District Rep and Admin staff

Network Lead Teams are currently at every stage of development – some don't have any non-District staff identified, and some have teams as large as five people. The goal is that all LGN's would have a clearly identified team of people working together.

**Expectations:** The WCD office will provide a framework for how new Network Leads will be identified and what the scope of their responsibility and decision-making authority will entail (in process as of Fall 2022).

**Approval:** All Network Leads will require final affirmation/ appointment from the District Rep.



## **LGN Options**

The following reflects the range of possible forms of engagement that each LGN can explore (though not limited to these)\*:

### **In-Person**

- Overnight Retreats
- Regional Hub gatherings (geographically enabling day retreats)
- District Event add-ons (ex. meal at Prayer Retreat or District Conference, etc.)

### **Digital**

- Relational connect/resource sharing
- LGN specific workshops/toolbox for equipping
- Learning Circles (ex. time bound, 3-6 month focus; possible outside speaker/trainer/equiper)

*\* See also supporting document "Developing and Cultivating a Network"*





# INTERSECTION WITH PEER-TO-PEER COACHING CIRCLES



## Overall Coaching Circles

**Lead:** Graham English

A WCD Development team priority that has overlap with LGNs is the development of Peer-to-Peer Coaching Circles. You can find more information about these circles [HERE](#), but primary scope involves the following:

- 4-6 people
- Trained/equipped facilitator
- Peer coaching focus (with meeting framework/tools)
- Not defined around role/affinity
  - ▶ Peer Coaching Circles might have pastors/leaders who share a similar role (ie. all youth pastors), but they carry the possibility and intention to broaden relational integration (ie. a Peer Coaching Circle might have a lead pastor, chaplain and community engagement leader, etc.)

## INTERSECTION WITH PEER-TO-PEER COACHING CIRCLES

- Regional focus (whenever possible); want to enable regular in-person connects

A LGN Lead Team may choose to utilize the Peer Coaching Circle model within their overall LGN strategy (ie. facilitate role/affinity-based Circles), but this is at the prerogative of Network members.

For more information on Peer Coaching Circles, click [HERE](#).



# NEXT STEPS

To get connected to your Large Group Network, go to <https://www.thewcd.ca/networks.html> and fill out the contact form and someone will be in touch about next steps.



**WESTERN CANADIAN DISTRICT C&MA**

